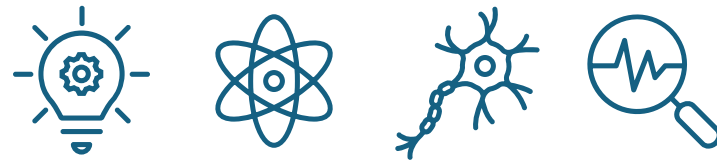


[ Open Science  
Week

# Interaktivní plánování správy dat s DSW

Marek Suchánek ([marek.suchanek@ds-wizard.org](mailto:marek.suchanek@ds-wizard.org), [0000-0001-7525-9218](tel:0000-0001-7525-9218))

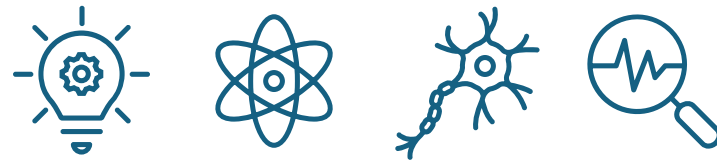
# Plánování správy dat **bez Data Stewarda**



Výzkum



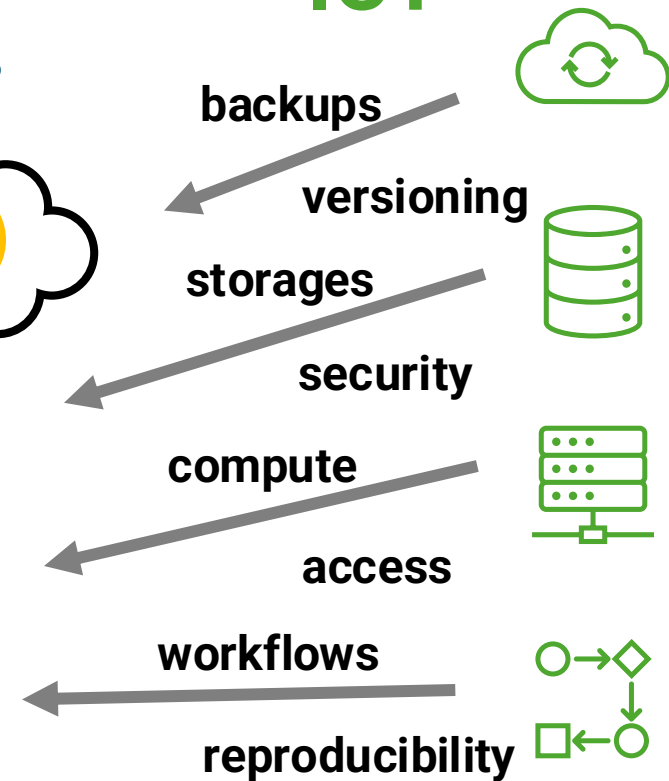
# Plánování správy dat **bez Data Stewarda**



**Výzkum**



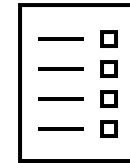
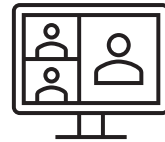
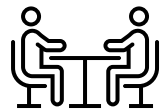
**ICT**



# Plánování správy dat bez Data Stewarda



# Plánování správy dat s Data Stewards

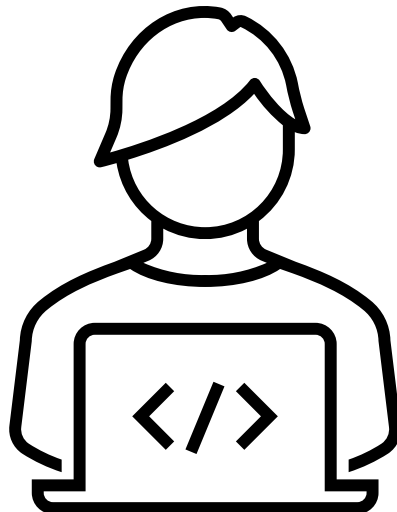
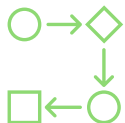


konzultace

webináře

příručky

wiki/web



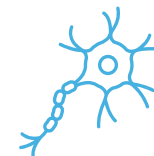
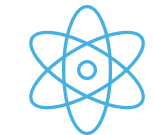
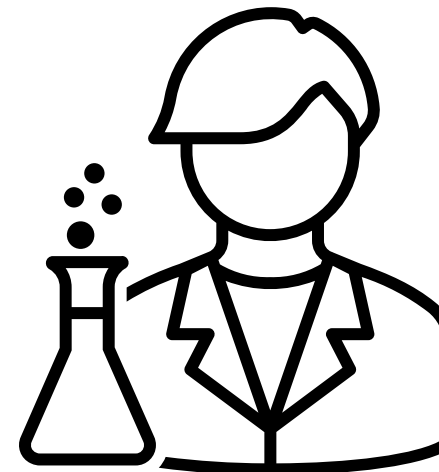
**Komunikace**



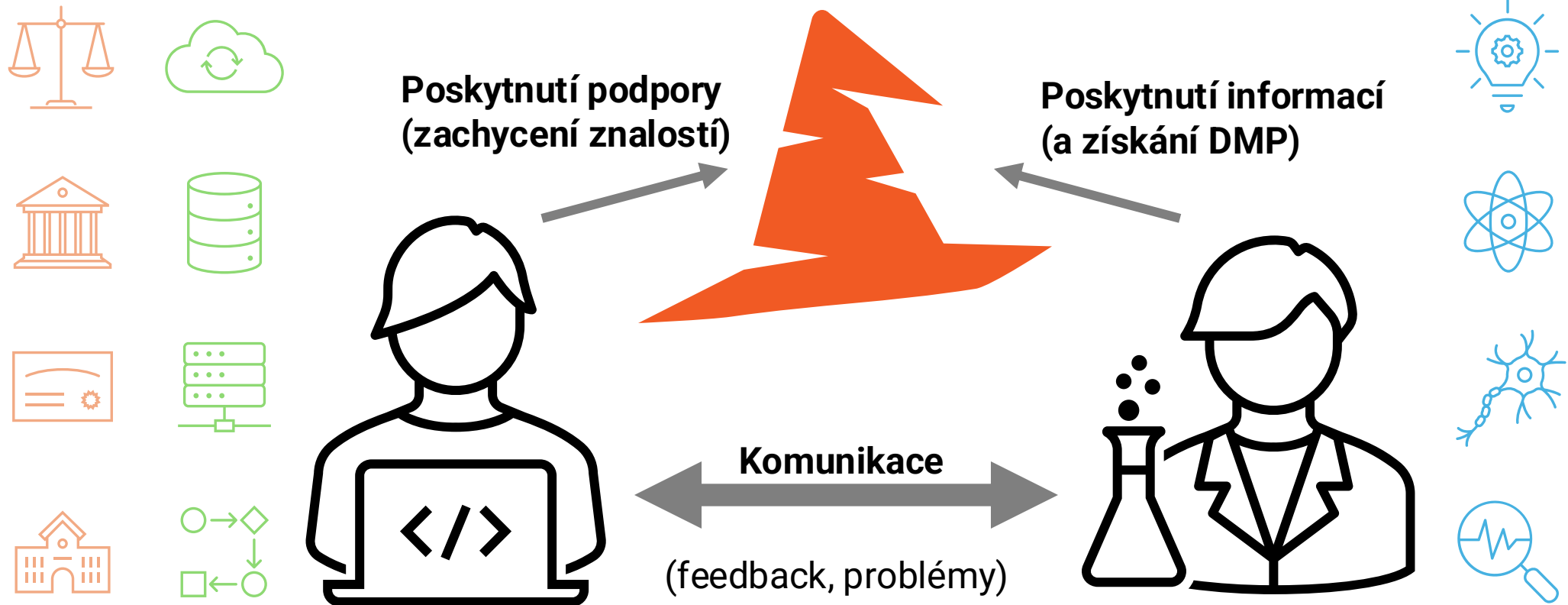
Pomoc / podpora



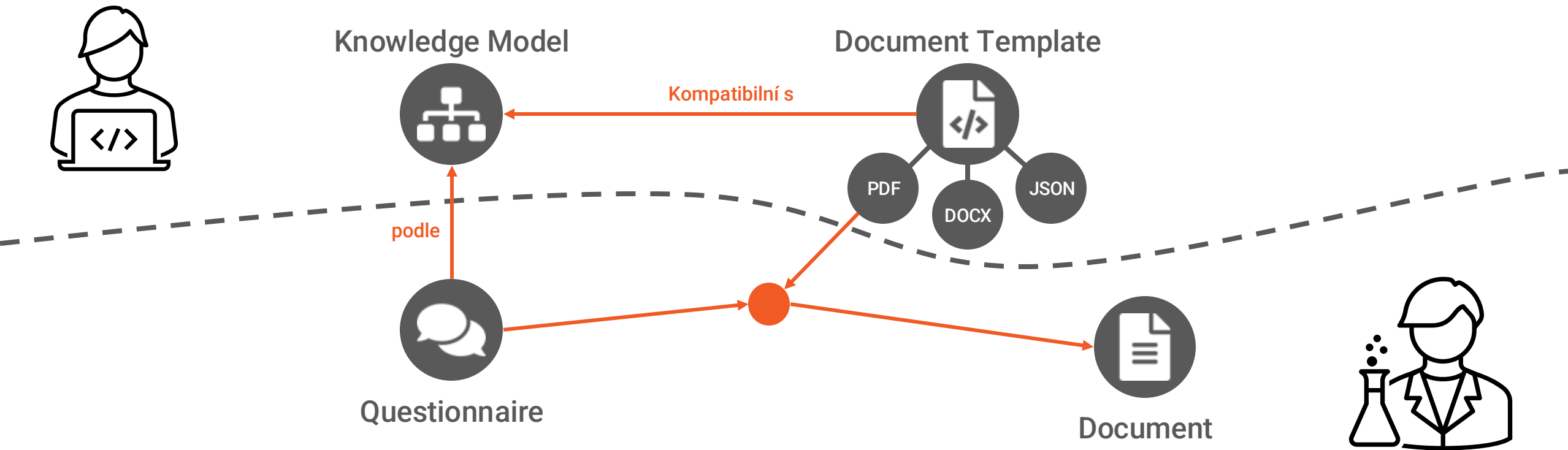
Požadavky / problémy



# Plánování správy dat s DSW



# Plánování správy dat s DSW





# 1) Vytváření projektu

## Create Project

**Name**

From project template     From knowledge model

Project templates are prepared projects with knowledge models, question tags, and document templates setup, so you don't have to start from scratch.

**Project Template**

## Project Template

--

- H** **Horizon Europe Project Template**  
Prepared project template set to use Horizon Europe DMP template
- S** **Science Europe Project Template**  
Prepared project template set for DMP compliant with Science Europe recommendations
- M** **Machine-Actionable DMP Project Template**  
Prepared template for producing maDMP according to the RDA DMP Common Standard





# 2.1) Vyplnění dotazníku

**Current Phase**

Before Submitting the Proposal

**Chapters**

- I. Administrative information 1
- II. Re-using data 1
- III. Creating and collecting data 7
- IV. Processing data 3
- V. Interpreting data 2
- VI. Preserving data 4
- VII. Giving access to data 2**

- Will you be working with the philosoph...
- Can all of your data become completel...
- Will you use temporary restrictions on ...
- Will metadata be available openly?

**VII.2 Can all of your data become completely open over time?**

Some data may be subject to a temporary embargo, or need to stay closed for specific reasons.

Desirable: Before Submitting the Proposal

a. No **Openness**

b. Yes **Openness**

Clear answer

Expand 3 follow up questions

**VII.3 Will you use temporary restrictions on the reuse of the data (embargo)?**

Desirable: Before Submitting the Proposal

a. No, all data will be opened immediately

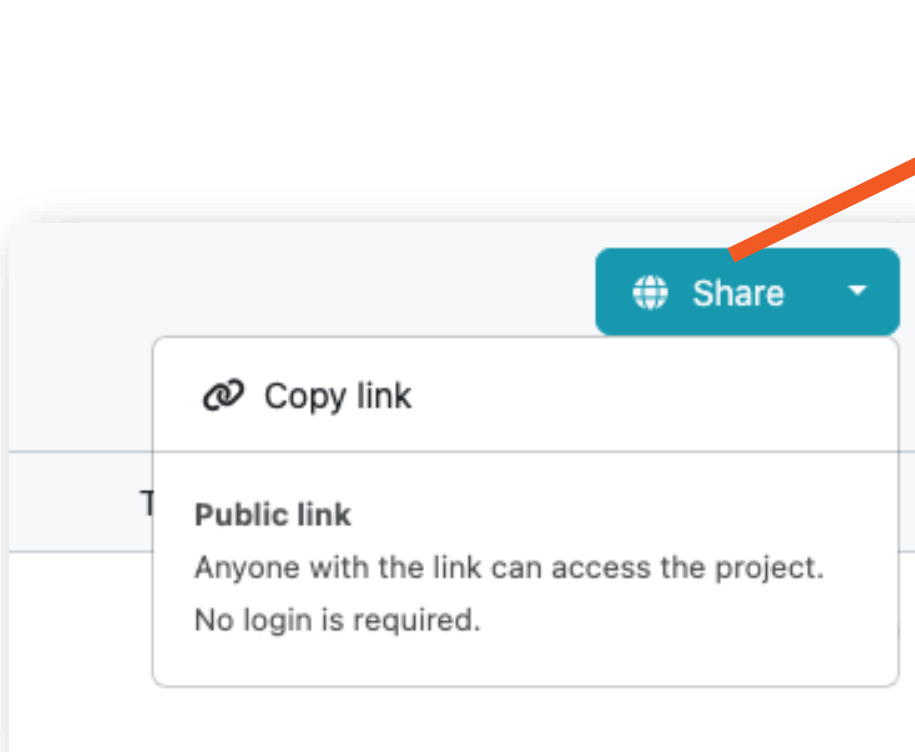
b. No, unrestricted data will be open immediately, restricted data will be indefinitely limited **Openness**

c. No, all data will be opened as soon as legal restrictions are falling away **Openness**

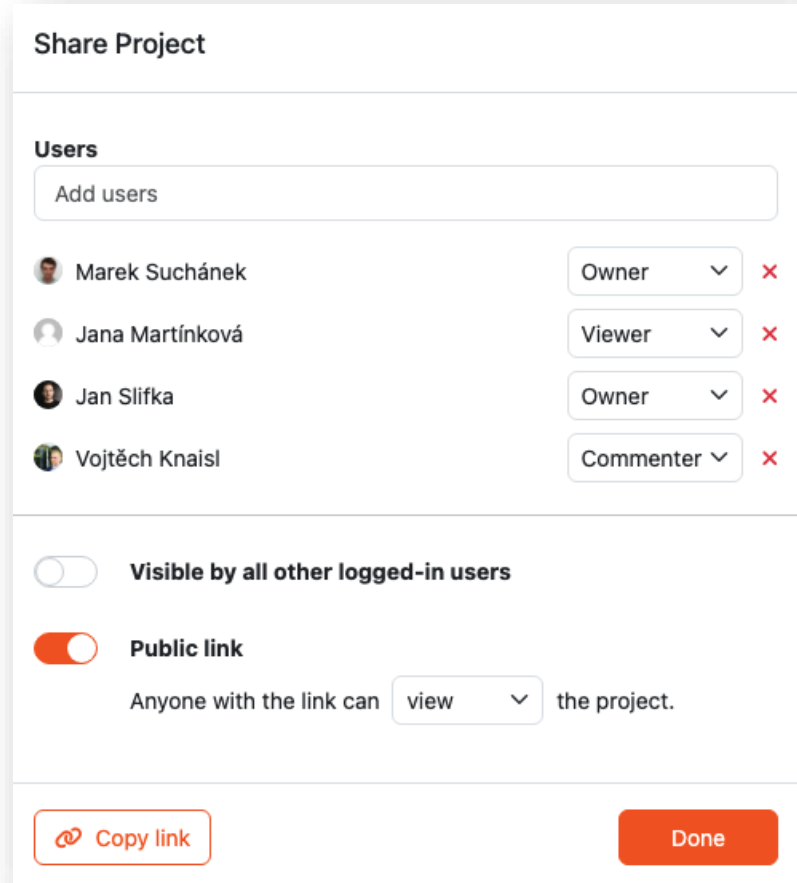
d. Yes, data without legal restrictions will be released openly after a fixed time period **Openness**

Clear answer

## 2.2) Kolaborace



The screenshot shows a 'Share' button with a globe icon and a dropdown arrow. A dialog box is open, displaying options for sharing the project. The 'Public link' option is selected, with the text: 'Public link. Anyone with the link can access the project. No login is required.'



The 'Share Project' configuration panel shows the following settings:

- Users:** A list of users with their roles and a red 'X' icon to remove them.

User	Role	Action
Marek Suchánek	Owner	X
Jana Martínková	Viewer	X
Jan Slifka	Owner	X
Vojtěch Knaisl	Commenter	X
- Visible by all other logged-in users:** A toggle switch that is currently off.
- Public link:** A toggle switch that is currently on. Below it, a dropdown menu is set to 'view', followed by the text 'the project.'

At the bottom of the panel, there are two buttons: 'Copy link' (with a link icon) and 'Done'.

## 2.3) Komentáře

**VII.1 Will you be working with the philosophy 'as open as possible' for your data?** 2 comments

The FAIR principles do not contain any direction towards "Openness". This is done on purpose, because there can be compelling reasons not to make data "Open", such as privacy, other sensitive data, or intellectual property protection.

Comments **2** Editor notes

**DSW Support** 18. 10. 2024, 8:52 (edited) ✓ 👤 ⋮

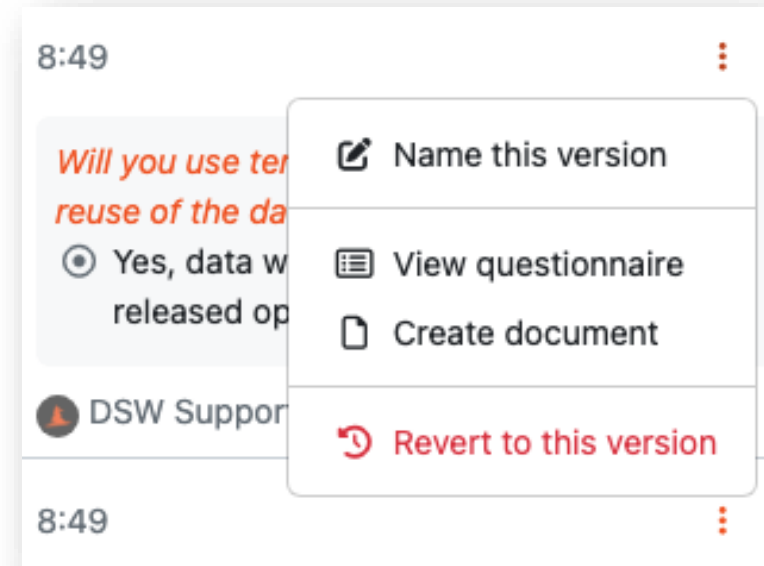
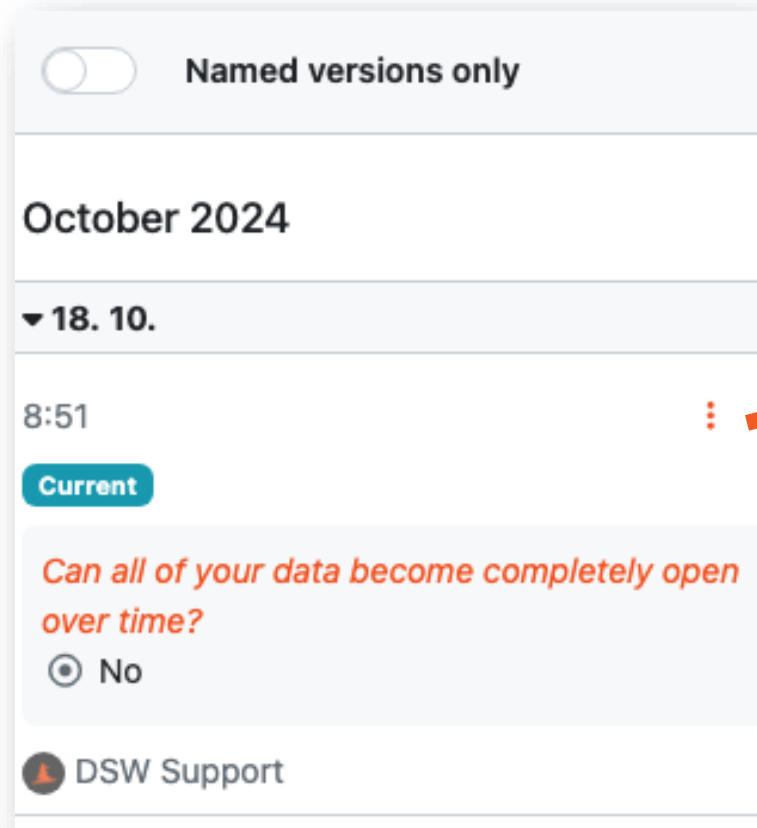
Please check this question... what do you think we should fill here based on our internal policies?

**DSW Support** 18. 10. 2024, 8:53 (edited) ⋮

+ should we consider Open Science recommendations?

Reply...

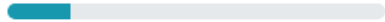
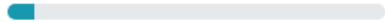
## 2.4) Historie změn



# 3) Generování dokumentu

## New Document

**Name**

Answered (current phase): 4/24   
Answered: 4/56 

**Document Template**

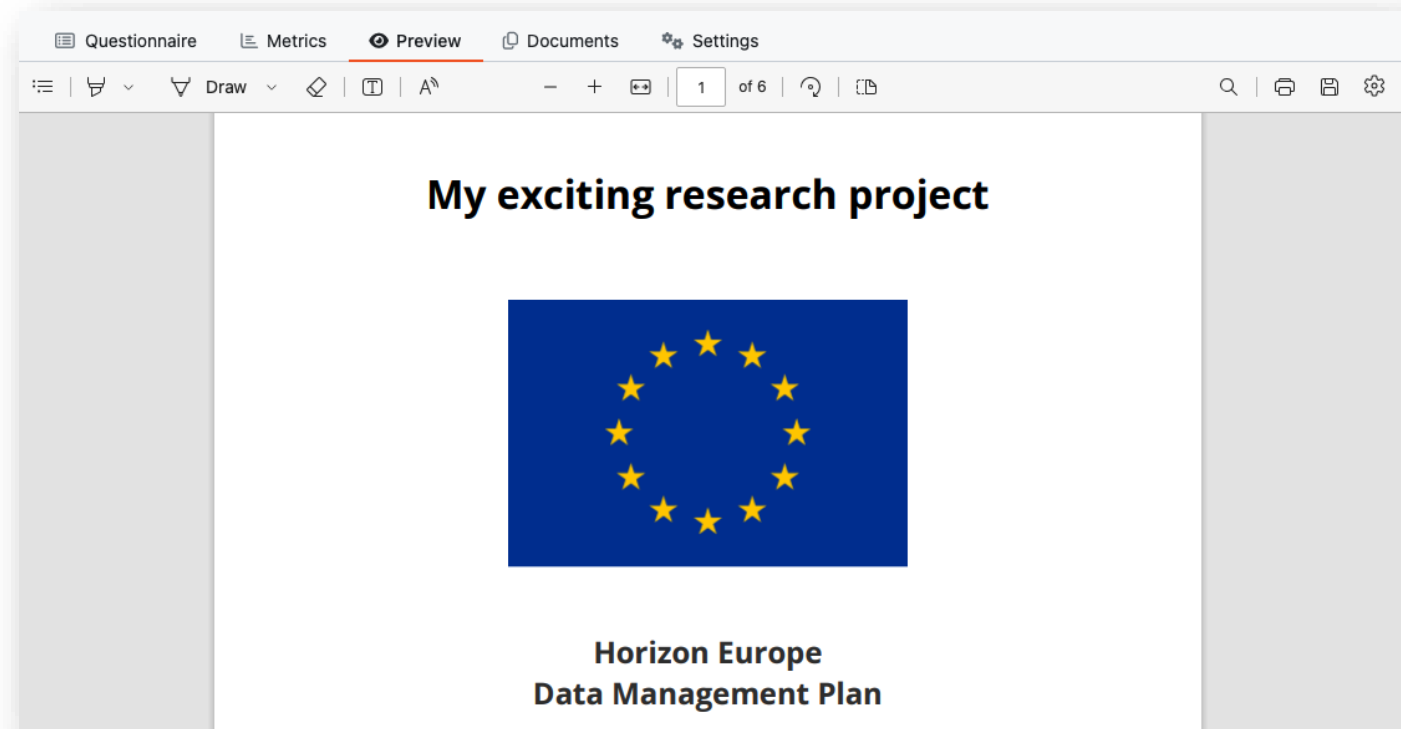
H **Horizon Europe DMP** 1.9.0  
Data Management Plan according to the Horizon Europe template

**Format**

HTML

PDF Document

MS Word Document



## 4) Zpětná vazba

**VII.1 Will you be working with the philosophy 'as open as possible' for your data?** + 2 comments ! 🔗

The FAIR principles do not contain any direction towards "Openness". This is done on purpose, because there can be compelling reasons not to make data "Open", such as privacy, other sensitive data, or intellectual property protection.

### Feedback

If you found something wrong with the question, you can send us your recommendation on how to improve it.


Title


Description

Cancel

Send

# 5) Aktualizace projektu


M **My exciting research project**  **update available**

 · Common DSW Knowledge Model 2.6.7

**My exciting research project**

Source KM `dsw:root:2.6.7`  
Target KM `dsw:root:2.6.8`

**Finalize migration**

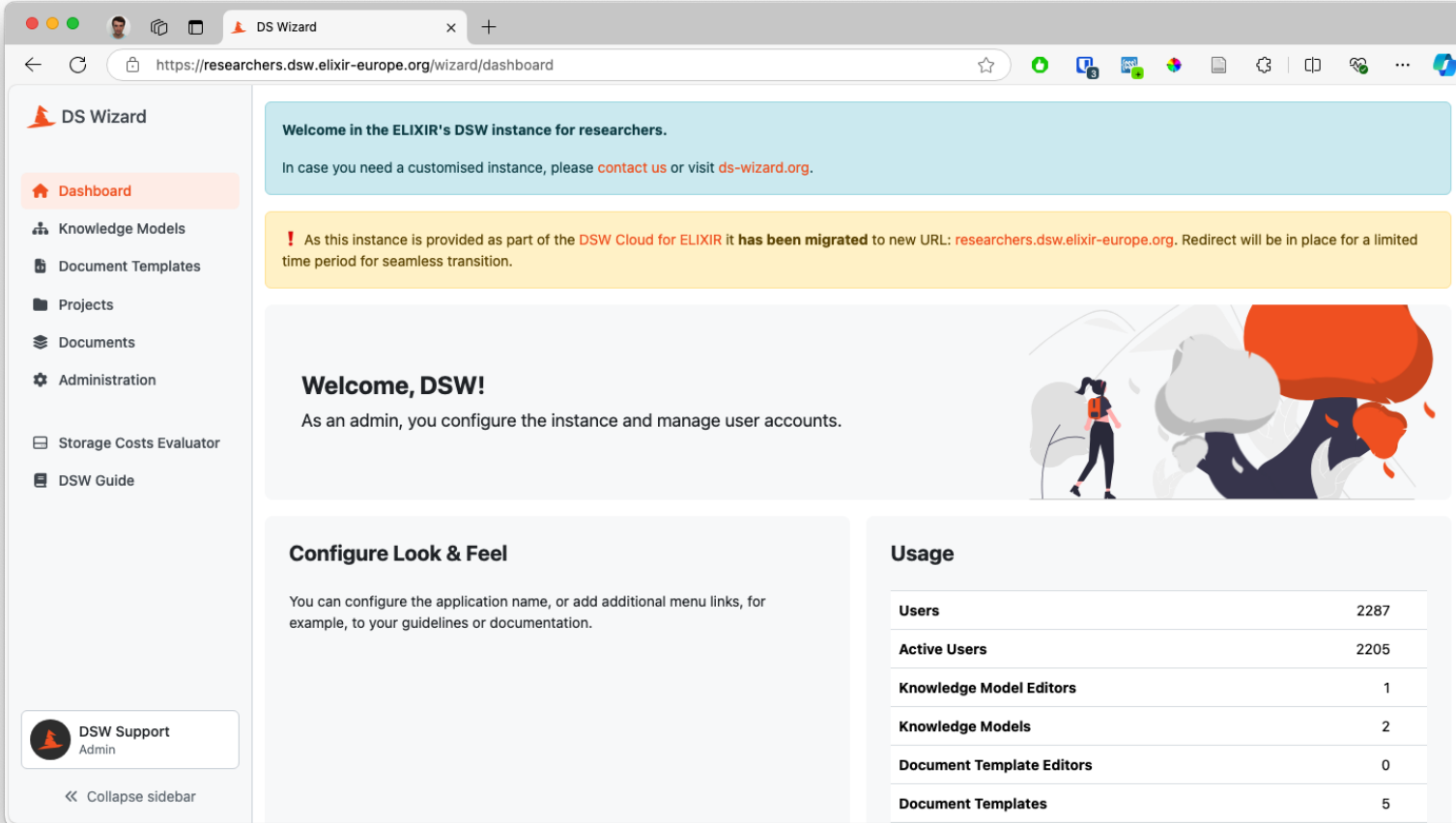


**No changes to review**

There are no changes affecting your answers.  
You can safely finalize the migration.



# Ukázka práce s DSW



The screenshot shows the DSW dashboard for researchers. The browser address bar displays `https://researchers.dsw.elixir-europe.org/wizard/dashboard`. The left sidebar contains navigation options: Dashboard, Knowledge Models, Document Templates, Projects, Documents, Administration, Storage Costs Evaluator, and DSW Guide. The main content area features a welcome message, a migration notice, a 'Welcome, DSW!' section with an illustration of a person carrying a large orange sphere, and two summary cards: 'Configure Look & Feel' and 'Usage'.

Welcome in the ELIXIR's DSW instance for researchers.  
In case you need a customised instance, please [contact us](#) or visit [ds-wizard.org](#).

! As this instance is provided as part of the DSW Cloud for ELIXIR it has been migrated to new URL: [researchers.dsw.elixir-europe.org](#). Redirect will be in place for a limited time period for seamless transition.

**Welcome, DSW!**  
As an admin, you configure the instance and manage user accounts.

**Configure Look & Feel**  
You can configure the application name, or add additional menu links, for example, to your guidelines or documentation.

**Usage**

Users	2287
Active Users	2205
Knowledge Model Editors	1
Knowledge Models	2
Document Template Editors	0
Document Templates	5

DSW Support Admin  
Collapse sidebar



[dsw.elixir-europe.org](https://dsw.elixir-europe.org)

[ **Open Science**  
**Week**

**Děkuji! Otázky?**